



The Advent Series



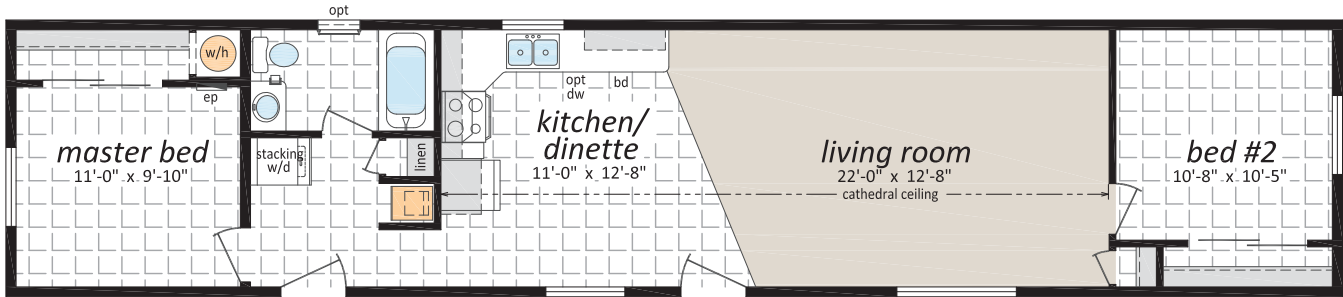
Single Section Homes



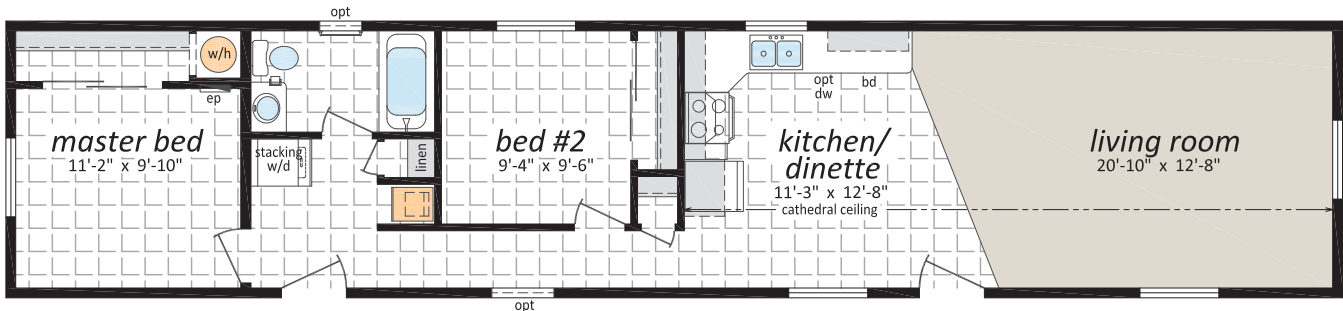
Sectional Homes



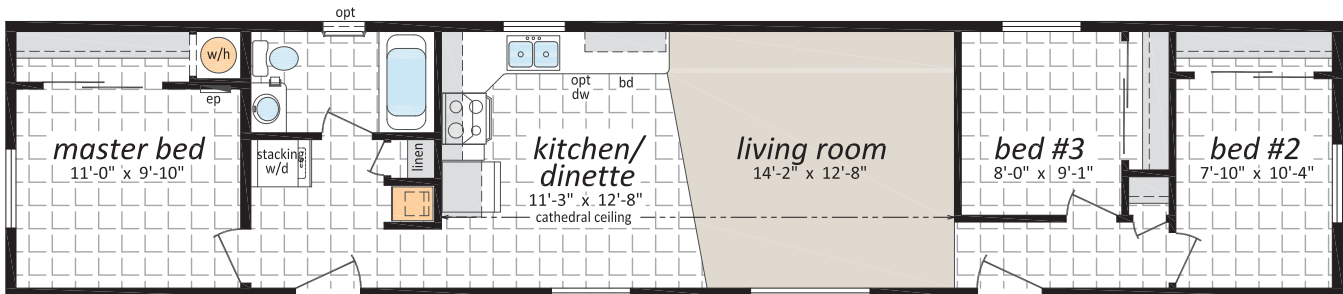
AS-2013, "The Amity" 14'x 66', 924 sq. ft.



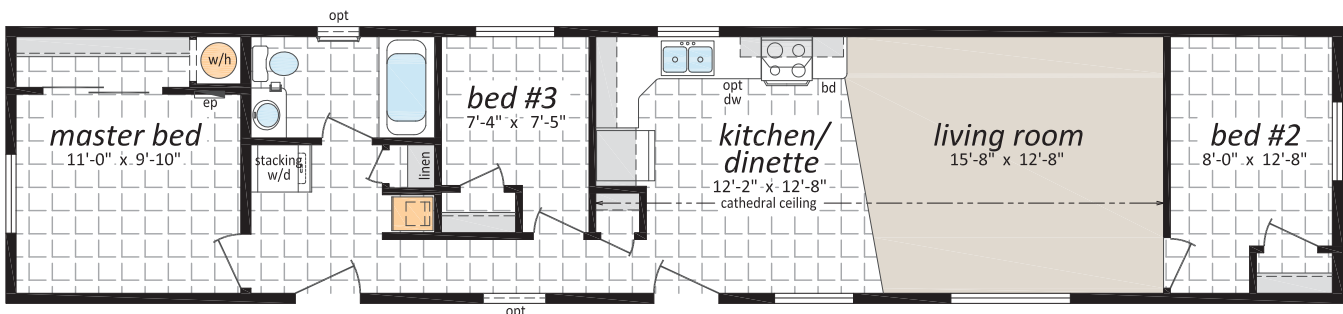
AS-2014, "The Allegra" 14'x 66', 924 sq. ft.



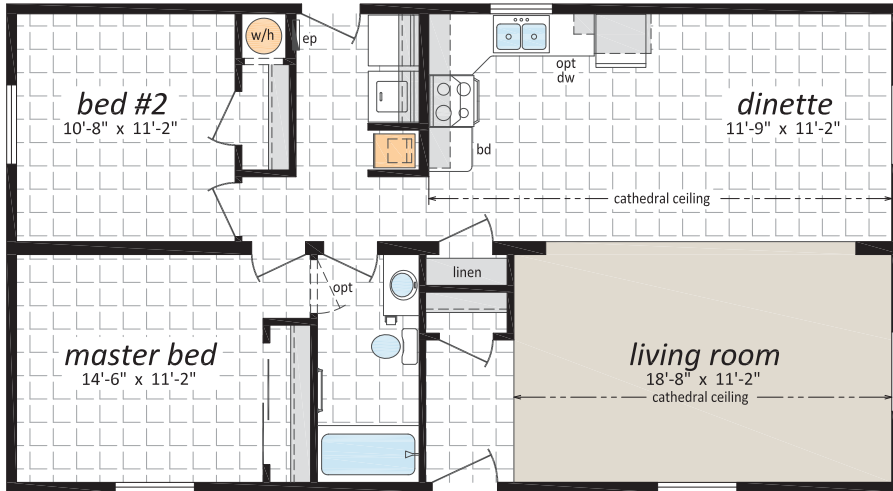
AS-2015, "The Arendal" 14'x 66', 924 sq. ft.



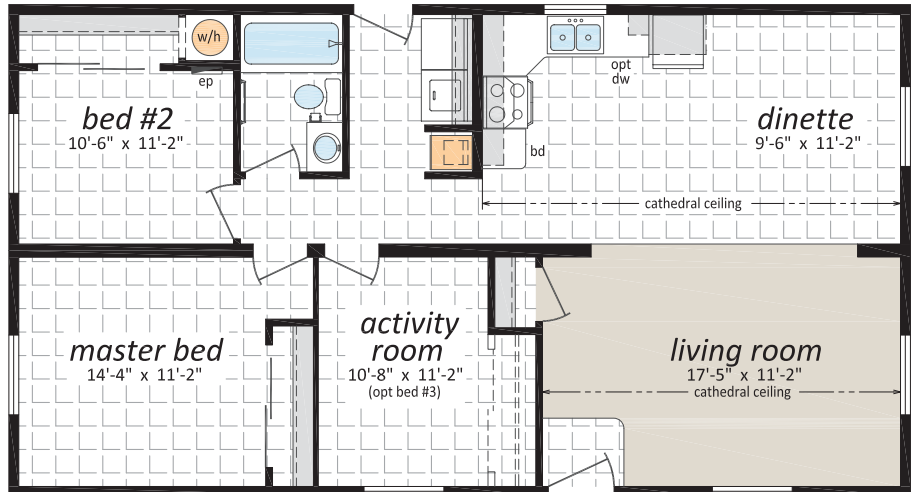
AS-2017, "The Augusta" 14'x 66', 924 sq. ft.



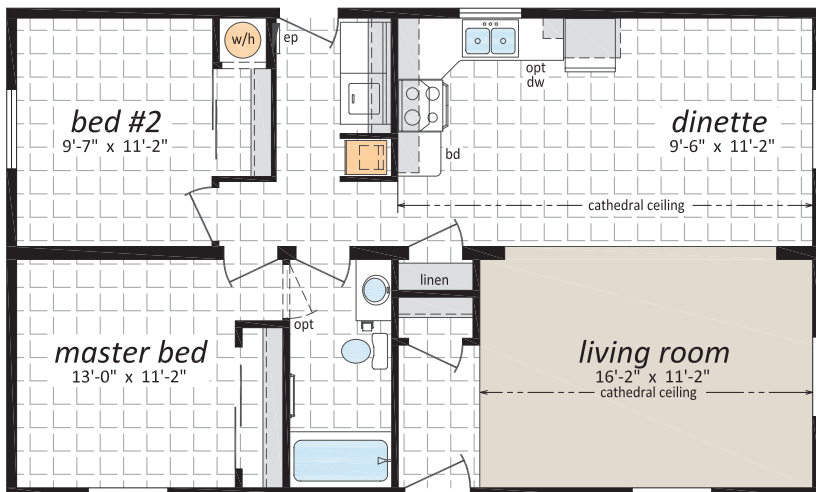
AD-2011, "The Athalia" 24'x 44', 1056 sq. ft.



AD-2012, "The Aurora" 24'x 44', 1056 sq. ft.



AD-2016, "The Avalon" 24'x 40', 960 sq. ft.



The Advent Series



Standard Features and Specifications

Exterior

- ★ Maintenance Free Vinyl Siding
- ★ Fibreglass Shingles
- ★ Attic Insulation: R-40 (*Common Areas*) R-32 (*Vaulted Areas*)
- ★ Vinyl Trim on All Windows and Doors
- ★ Porch Lights at all Exterior Doors
- ★ 6-Panel Insulated Exterior Doors
- ★ Low E & Argon Gas Thermal Pane PVC Windows with Screen and Safety Latch
- ★ Residential 8' Walls
- ★ 2x6 Exterior Walls @ 24" o.c. w/ 3 Belt Rails and R22 Insulation
- ★ 19/32" OSB Floor Sheathing - Screwed and Glued
- ★ 2x8 Floor Joists with R33 Insulation
- ★ Box Steel Frame with Detachable Hitch
- ★ G.F.I. Exterior Receptacle
- ★ Frost Free Exterior Tap
- ★ Poly Vapour Barrier
- ★ Heat Tape Receptacle

Interior

- ★ Cathedral Ceiling in Living Room, Kitchen and Dinette
- ★ Vinyl Covered Gyproc Decorative Wall Panels
- ★ Textured Ceilings
- ★ Flat-Panel White Interior Doors
- ★ Carpet in Living Room
- ★ Linoleum Elsewhere
- ★ Factory Select Light Package
- ★ Light Bulbs in all Fixtures
- ★ Shelving Over Washer/Dryer Area
- ★ Cellular Shades Throughout

Kitchen

- ★ Rangehood with Two Speeds and Light, Vented to Exterior
- ★ Stainless Steel Kitchen Sink
- ★ PVC Cabinets & Designer Hardware
- ★ Deep Cabinet over Refrigerator
- ★ 2 rows of 3"x6" Tile Backsplash

Bathroom

- ★ One Piece Tub and Shower with Chrome Single-Lever Faucet
- ★ Dual Handle Vanity Faucets
- ★ Designer Light Fixture over Vanity
- ★ Curved Shower Rod /w Liner in Bathroom
- ★ 2 rows of 3"x6" Tile Backsplash
- ★ Exhaust Fan in Bathroom
- ★ G.F.I. Protected Receptacle in Bathroom
- ★ Privacy Locks on Bathroom Door

Utilities

- ★ 40 Gallon (IMP) Electric Water Heater
- ★ High-Efficiency A/C Ready Natural Gas Furnace with Electronic Ignition
- ★ Smoke Detectors as per code
- ★ Plumbed and Wired for Washer and Dryer
- ★ Dryer Vent Kit
- ★ Built to CSA Z-240 Standard



Popular Optional Features

Exterior

- Exterior Third Gable - 12'
- Armour Guard Eave Protection
- 2x2 or 2x4 Skylights
- Upgraded Roof Snowloads
- 36"x36" Hall Window
- 24"x36" Bathroom Window
- Larger Window in Living Room
- Shutters
- Faux Rock Accents

Interior

- Appliances
- Utility Room Door with Grill
- Washer and Dryer Cabinets
- Electric Furnace
- 40 Gallon US Convertible Gas Water Heater
- Electric Fireplace with Mantle



www.srikelowna.ca

9500 Jim Bailey Road · Kelowna · BC · V4V 1S5

Authorized Retailer: